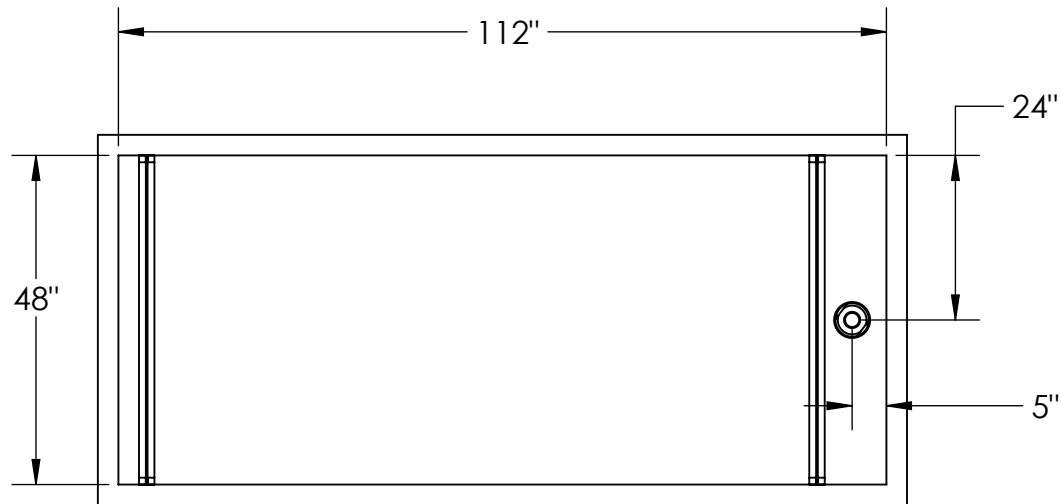
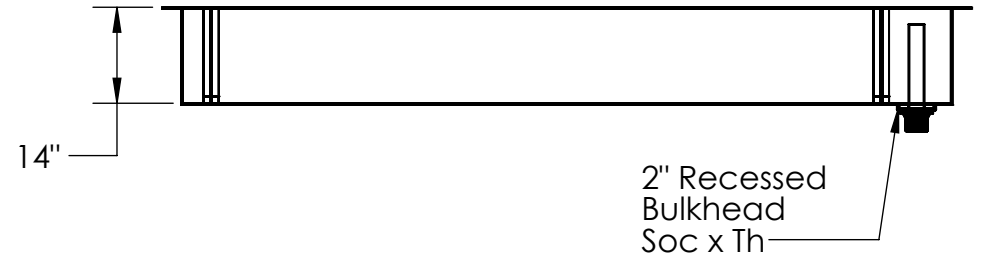


Gel Coat Cobalt Blue  
Interior and Exterior



9558 Camino Ruiz  
San Diego, CA 92126

DRAWING #  
RCT-323

SHEET TITLE  
RCT-323  
Dimensional Drawing

\* COPYRIGHT \*  
These drawings including design idea  
and construction techniques herein are the  
sole property of Gemini Fiberglass Inc.  
They shall not be revised, copied, or  
reproduced in any manner without the  
written consent of Gemini Fiberglass Inc.

DESCRIPTION  
RCT-323 112" x 48" x 14" Fiberglass  
Tank with Dual Removable Screens

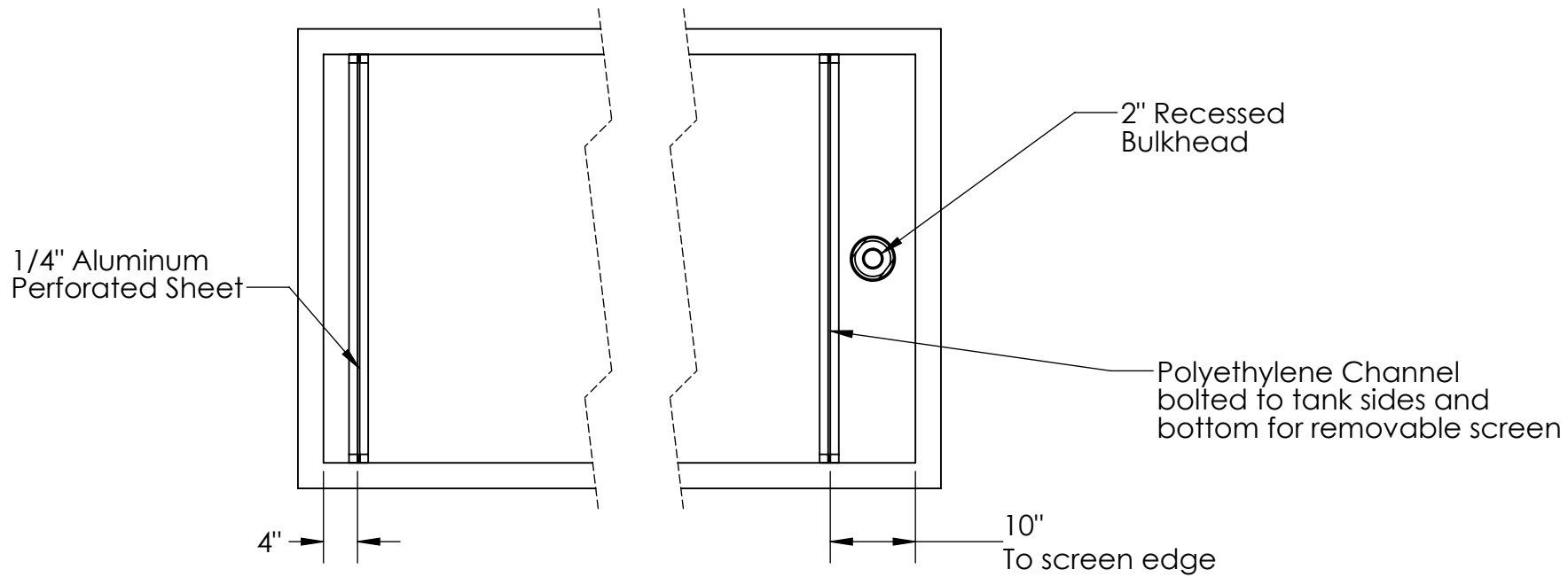
DRAWN BY  
MP

DATE  
4/22/2015

REVISION

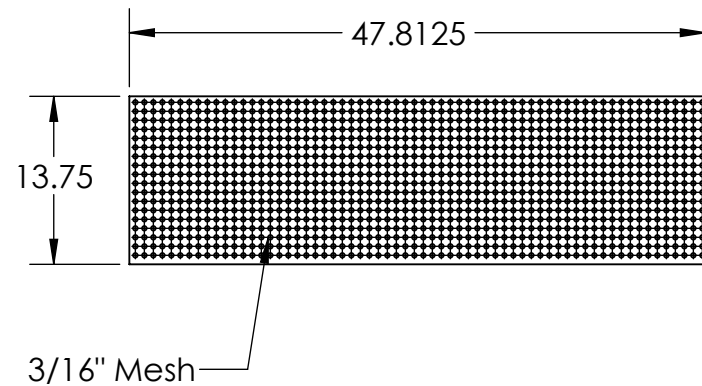
SCALE  
1:28

SHEET #  
1 OF 2



## Notes

- Aluminum Screens to be reinforced to hold clay media
- 2 " Bulkhead to be recessed. Soc x Thread
- Interior and Exterior gel coat to be cobalt blue



\* COPYRIGHT \*  
These drawings including design idea  
and construction techniques herein are the  
sole property of Gemini Fiberglass Inc.  
They shall not be revised, copied, or  
reproduced in anymanner without the  
written consent of Gemini Fiberglass Inc.

**DESCRIPTION**  
RCT-323 112 x 48" x 14" Fiberglass  
Tank with Dual Removable Screens

**DRAWN BY**  
MP

**DATE**  
4/22/2015

**REVISION**

**DRAWING #**  
RCT-323

**SHEET TITLE**  
RCT-323  
Screen detail

**GEMINI**  
FIBERGLASS  
9558 Camino Ruiz  
San Diego, CA 92126

**SCALE**  
1:28

**SHEET #**  
2 OF 2